

DEALER STAMP

Tyre checks you can do:

There are also a number of simple checks you can carry out yourself to ensure tyre safety including:

- Checking the pressure every two weeks – when tyres are cold
- Checking the tread depth of your tyres
- Checking your tyres for damage – including cuts and cracks
- Checking the pressure and tread depth of your spare tyre



Why choose a Peugeot Dealership?

- **Unrivalled expertise:** all Peugeot Technicians are highly trained and regularly reassessed
- **The best equipment:** Peugeot Technicians have access to the latest specialist tools and diagnostic equipment specifically designed for working with Peugeots
- **Resale value:** a full manufacturer's service and repair history will maximise the resale value of your Peugeot
- **Peugeot parts:** Peugeot Technicians use parts made specifically for Peugeots, which are designed and manufactured to our exacting standards

TYRES

ALL YOU NEED TO KNOW



Your tyres work hard – cushioning you from bumps, maintaining responsive steering and most importantly allowing you to stop quickly if needed.

As one of your vehicle’s most important features, Peugeot have carefully selected your tyres from leading manufacturers. Chosen for their reliability, performance and safety, they are perfectly suited to your Peugeot.

However, constant contact with the road means that over time your tyres will begin to wear down. Not only can this impact on your driving experience, but it also means your tyres can become unsafe and possibly illegal to use on the road.

Why is tyre tread so important?

Your safety, along with that of your passengers and other road users, can be critically linked to the condition of your tyres. If tyre tread depth falls below the legal limit of 1.6mm then any of the following can occur:

- Road handling can be reduced
- Braking distances can increase
- The chance of aquaplaning is increased



What are the penalties for using illegal tyres?

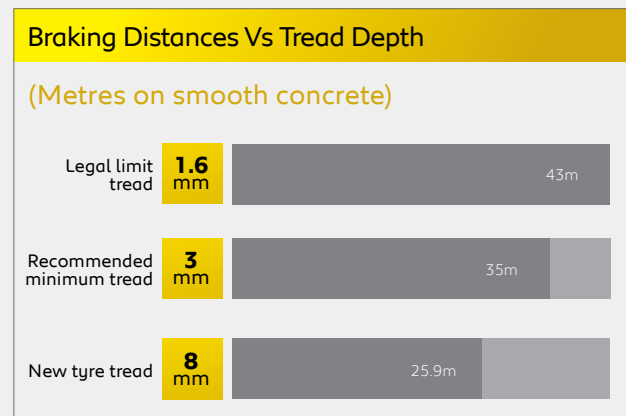
Tyre tread is so important to a vehicle’s safety that there are strict penalties for using tyres with a tread below the legal requirement of 1.6mm:

Number of Illegal Tyres	Fine up to	Points on Licence
1	£2,500	3
2	£5,000	6
3	£7,500	9
4	£10,000	12

Driving with worn tyres is a risk definitely not worth taking.

When should you replace your tyres?

Although the current legal minimum for tyre tread depth is 1.6mm, recent research shows that tyres with a tread below 3mm have a significantly reduced braking distance, especially in wet weather conditions.



Source: RoSPA

Peugeot Recommends:

With thousands of road traffic accidents caused by poor weather each year, replacing tyres before they wear down below 3mm could make a real difference to your vehicle’s safety. This is why Peugeot recommend you change your tyres when they reach a 3mm tread depth.

How can Peugeot help?

The benefits of having your Peugeot regularly serviced are obvious. However, it’s also important to look after your tyres between these times as well. That’s why we’ve introduced the Peugeot Tyre Safety Check Programme.

This free* tyre check service allows us to check the condition of your tyres and make sure they’re well maintained. It includes:

- Expert assessment from a trained tyre Technician
- Advice on estimated remaining life of your tyres

There’s no need to book, just drop by and we’ll be happy to carry out all the checks for you. If your vehicle does need one or more new tyres, we will guarantee that the tyres we fit meet correct specifications. Please speak to one of our Customer Advisers for more information.

*At participating Dealers.